

Mileage Recalibration in W204/W212/W218/X204/W207/W197

In the current verison of the Mercedes Commander (version 5.6) the mileage can be changed in the following locations:

- Instrument Cluster
- EZS
- ASSYST Service History Records
- ASSYST PLUS Service History Records
- Battery Sensor

It is important to note that it is not necessary to read and save any files for backup, because everything is done automatically.

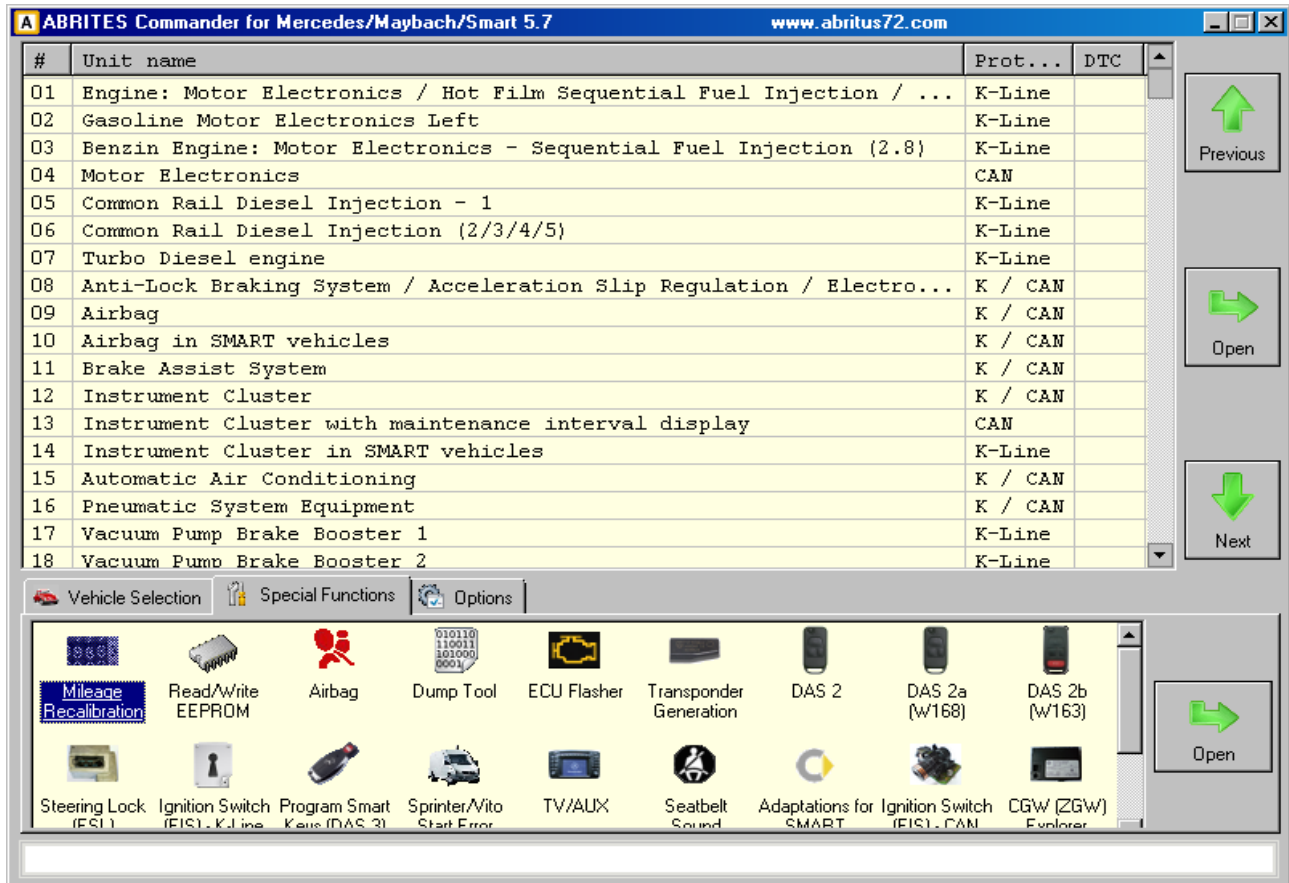
If you have any remarks or question, please write an email to support@abritus72.com

Table of Contents

Mileage Recalibration in W204/W212/W218/X204/W207/W197.....	1
1. Mileage recalibration in Instrument Cluster and EZS.....	2
2. Mileage recalibration in ASSYST and ASSYST PLUS (Service History Records).....	5
3. Mileage recalibration in Battery Sensor.....	6

1. Mileage recalibration in Instrument Cluster and EZS

1. In order to change the mileage in the Instrument Cluster, please under “Special Functions” select “Mileage Recalibration” and press the button “Open” like shown in the next screenshot.



2. Select the option “C (W204)/E (W212)/GLK (X204)/SLS (W197)/CLK (W207)/CLS W218” and press the button “OK”.

Vehicle Selection

Mileage Recalibration in dashboard

- ☐ A-Class W168 (before year 2000)
- ☐ A-Class W168 (after year 2000)
- ☐ A-Class W169 / B-Class W245
- ☐ C-Class (W202), CLK (W208) 1995-1998
- ☐ C-Class (W202), CLK (W208) 1998-2000
- ☐ C-Class W203, CLK W209, G-Class (W463) (- 2004)
- ☐ C-Class W203, CLK W209, G-Class W463 (after 2004)
- ☐ E-Class (W210 1995-04, 1998)
- ☐ E-Class (W210 04, 1998-06, 1999)
- ☐ E-Class (W210 07, 1999-02, 2002)
- ☐ E-Class (W211), CLS (W219)
- ☐ G-Class (W463) (up to 2004)
- ☐ G-Class (W461)
- ☐ ML (W163), SL W129, W170
- ☐ S-Class (W140)
- ☐ SLK (38-pin diagnostic link)
- ☐ SLK R171
- ☐ SL W230 (CAN only)

Mileage Recalibration in dashboard

- ☐ Smart 451
- ☐ Smart 454
- ☐ Smart 456
- ☐ S-Class W220 / CL 215
- ☐ S-Class W221 / CL 216
- ☐ Vito / Sprinter / Viano (2006 +) ; VW Crafter (2006 +)
- ☐ Vito 638 (Magnetti Marelli)
- ☐ R-Class (W251), GL (X164), ML (W164)
- ☒ C (W204)/E (W212)/GLK (X204)/SLS (W197)/CLK (W207)/CLS W218

ASSYST service history records

- ☐ C-Class W203; S-Class W220; Vito 639; E-Class W210; G-Class W463; A-Class W168 (K-Line by OBDII)
- ☐ Service Records by EEPROM Dump

OK Cancel

3. Under the Group “Main Odometer in Dashboard and EZS” press the button “Get” and you will see the current mileage in the Instrument Cluster and the EZS.

Mileage Recalibration and Service History Editor (by OBD): W204 / W207 / W212 / X204 / W197 / W218

Main Odometer in Dashboard and EZS

0

Get Set

Adapt Used Dashboard to EZS

Learn

Exit

Number of service history records:

0

Get Erase Last Service Service A Service B General Servicing

Service History Entries

Service Records Number

Main Odometer

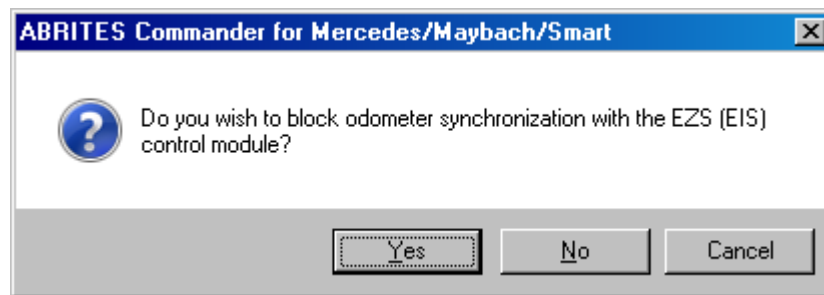
Day Cycle Counter

Mileage to service

Days to service

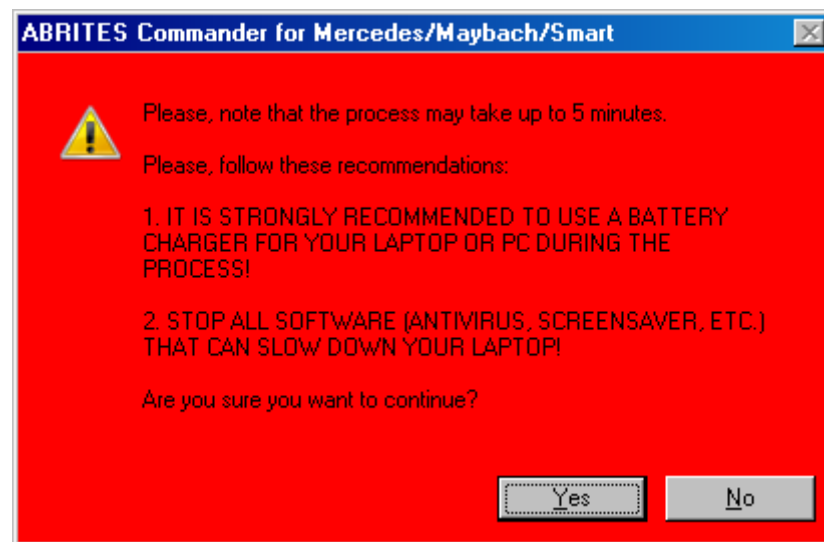
Get Set

4. If you wish to set the mileage – press the button “Set”. The software will ask you if you wish to block the synchronization between the cluster and the EZS:



Here you have 2 options:

- If you answer “No” the mileage in the dashboard will be changed and if the synchronization with the EZS is not already blocked – the mileage will jump back after 2 seconds.
- If you select “Yes” the Mercedes Commander will show you a warning:



You should pay attention to this warning and make sure your laptop is powered with a constant power supply. The process takes less than 5 minutes, so usually it is not necessary to use a booster for the battery of the car.

The Mercedes Commander needs to have free resources (CPU, RAM) during these 5 minutes, so it is strongly recommended to stop screensavers, antivirus, Office and other application, which may slow down the PC during this time.

IT IS VERY IMPORTANT TO NOTE THAT EVEN IF THE PROCEDURE FAILS, YOU CAN ALWAYS REPEAT IT. YOU MAY REPEAT THE PROCEDURE AS MANY TIMES AS IT IS NECESSARY TO FINISH THE JOB SUCCESSFULLY. THERE IS ABSOLUTELY NO DANGER OF ENDING UP WITH A DAMAGED UNIT WHEN USING THE MERCEDES COMMANDER.

5. After the procedure has finished successfully you will see the new mileage in the Instrument Cluster. You can verify it by pressing the button “Get” once again – the mileage in the Cluster and EZS will be as you put them.

2. Mileage recalibration in ASSYST and ASSYST PLUS (Service History Records)

1. Under the Group “Number of service history records” press the button “Get” and you will see the current number of service history records.

The screenshot shows a software window titled "Mileage Recalibration and Service History Editor (by OBD): W204 / W207 / W212 / X204 / W197 / W218". The interface is divided into several sections:

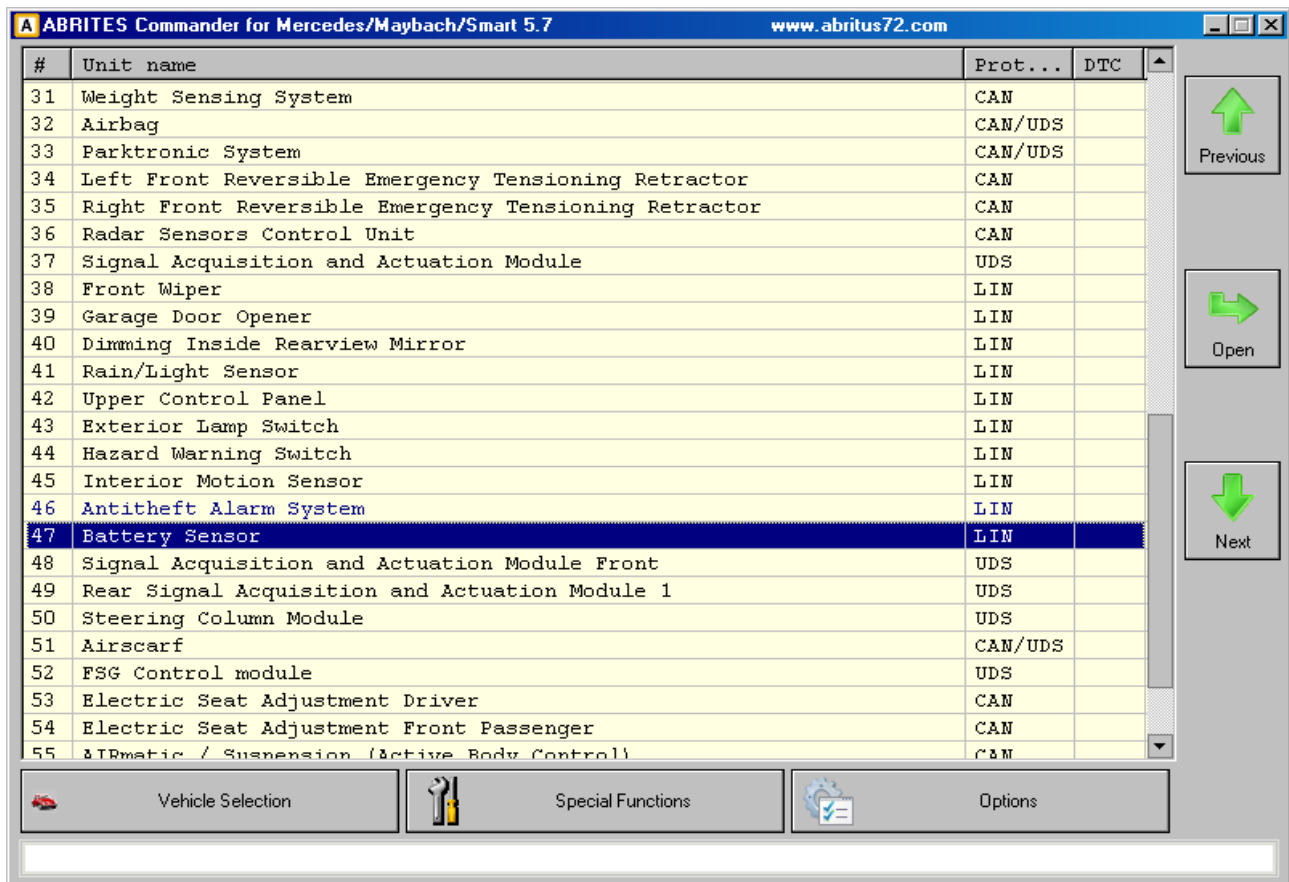
- Main Odometer in Dashboard and EZS:** Contains a text box with the value "0" and two buttons labeled "Get" and "Set".
- Adapt Used Dashboard to EZS:** Contains a single button labeled "Learn".
- Exit:** A button with a red "X" icon and the label "Exit".
- Number of service history records:** Contains a text box with the value "13" and five buttons: "Get" (highlighted with a dashed border), "Erase Last Service", "Service A", "Service B", and "General Servicing".
- Service History Entries:** A section containing:
 - A dropdown menu for "Service Records Number" currently set to "1".
 - Text boxes for "Main Odometer" (14800), "Day Cycle Counter" (241), "Mileage to service" (200), and "Days to service" (115).
 - Two buttons at the bottom labeled "Get" and "Set".

2. If you wish to view and edit some of the records – select the number of the records from the dropdown menu called “Service Records Number”. If you press the button “Get” you will see the stored values – you can edit them by pressing the button “Set”.

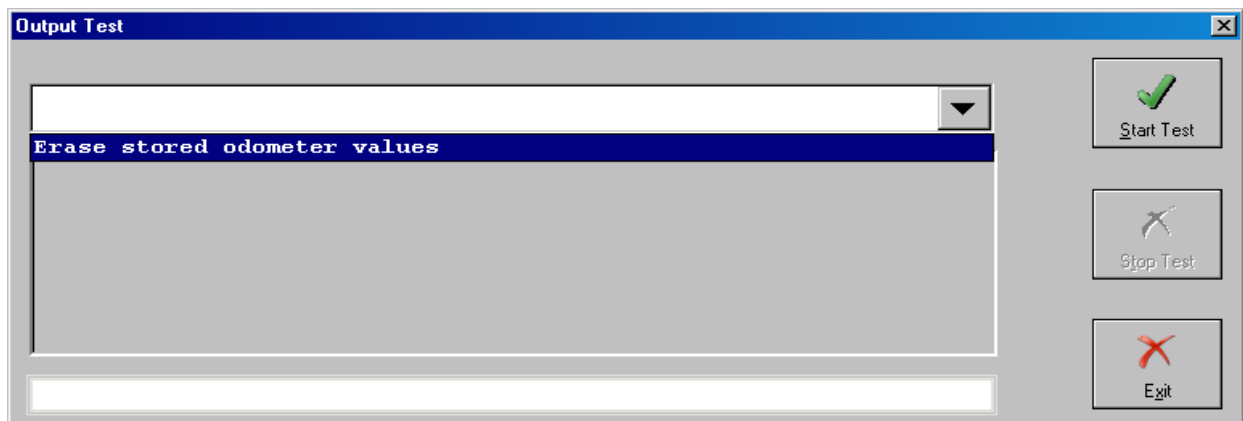
In addition you can erase the last service record, or perform servicing by pressing the buttons “Service A”, “Service B” or “General Servicing”.

3. Mileage recalibration in Battery Sensor

1. From the list of control units select and connect to the Battery Sensor control unit:



2. Press the button “Output Tests” and you will see the following screen:



Select “Erase stored odometer values” and press the button “Start”. Wait 1 second and then close the screen.

After that – press the button “Actual Values”. You will see “Error” in the first 5 values. These values will be automatically updated with the new mileage when the car is locked and left alone for about 1 hour.