

Odometer correction for W168 A-Class, W202 C-Class, W140 S-Class, W210 E-Class, W461 G-Class, W208 CLK, W220 S-Class, W163 ML

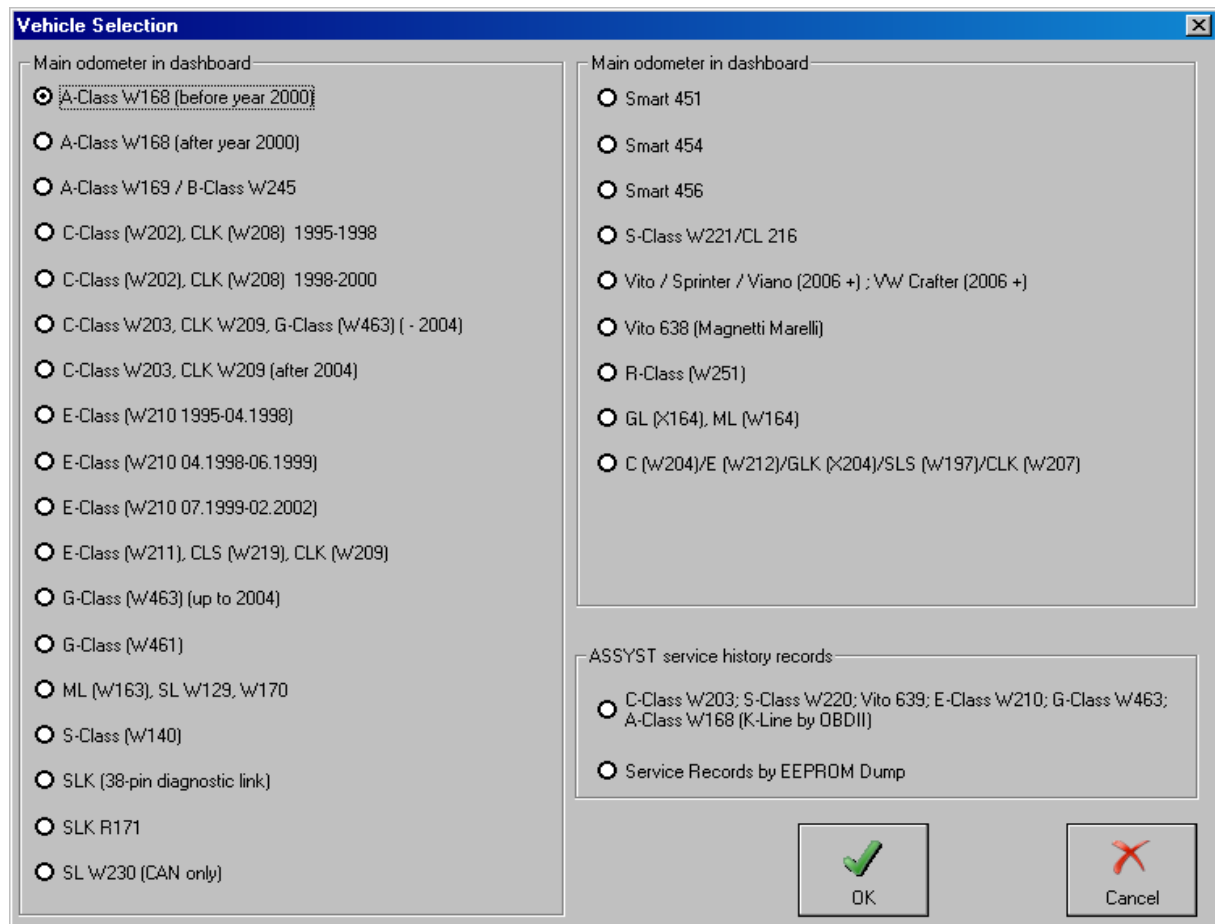
In this manual is described how to change the odometer in the following vehicles:

- A-Class W168 1997-1999
- A-Class W168 2000-2004
- C-Class W202 1996-2000
- S-Class W140 1996-1998
- E-Class W210 1996-2002
- G-Class W461 1996-2000
- CLK W208 1996-2001
- W220 S-Class 1999-2002
- W163 ML 1996-2004

In all these vehicles the odometer is stored only in the Instrument Cluster. In the EEPROM of the Instrument Cluster information is stored about the main odometer of the car (the mileage that is displayed in the dashboard) and the service history information (also known as ASSYST).

1. Modifying the Main Odometer

Open the Special Functions tab and select the appropriate vehicle model. It is not a problem if you are not sure exactly which model you have to select. For example if you are not sure whether to select "A-Class W168 (before year 2000)" or "A-Class W168 (after year 2000)" you can try the first option first and if the main odometer is not changed, you can try the second option.



The image shows a 'Vehicle Selection' dialog box with two main sections for selecting vehicle models and a section for service history records.

Main odometer in dashboard

- ☒ A-Class W168 (before year 2000)
- ☐ A-Class W168 (after year 2000)
- ☐ A-Class W169 / B-Class W245
- ☐ C-Class (W202), CLK (W208) 1995-1998
- ☐ C-Class (W202), CLK (W208) 1998-2000
- ☐ C-Class W203, CLK W209, G-Class (W463) (- 2004)
- ☐ C-Class W203, CLK W209 (after 2004)
- ☐ E-Class (W210 1995-04.1998)
- ☐ E-Class (W210 04.1998-06.1999)
- ☐ E-Class (W210 07.1999-02.2002)
- ☐ E-Class (W211), CLS (W219), CLK (W209)
- ☐ G-Class (W463) (up to 2004)
- ☐ G-Class (W461)
- ☐ ML (W163), SL W129, W170
- ☐ S-Class (W140)
- ☐ SLK (38-pin diagnostic link)
- ☐ SLK R171
- ☐ SL W230 (CAN only)

Main odometer in dashboard

- ☐ Smart 451
- ☐ Smart 454
- ☐ Smart 456
- ☐ S-Class W221/CL 216
- ☐ Vito / Sprinter / Viano (2006 +) ; VW Crafter (2006 +)
- ☐ Vito 638 (Magnetit Marelli)
- ☐ R-Class (W251)
- ☐ GL (X164), ML (W164)
- ☐ C (W204)/E (W212)/GLK (X204)/SLS (W197)/CLK (W207)

ASSYST service history records

- ☐ C-Class W203; S-Class W220; Vito 639; E-Class W210; G-Class W463; A-Class W168 (K-Line by OBDII)
- ☐ Service Records by EEPROM Dump

At the bottom right, there are two buttons: 'OK' (with a green checkmark icon) and 'Cancel' (with a red X icon).

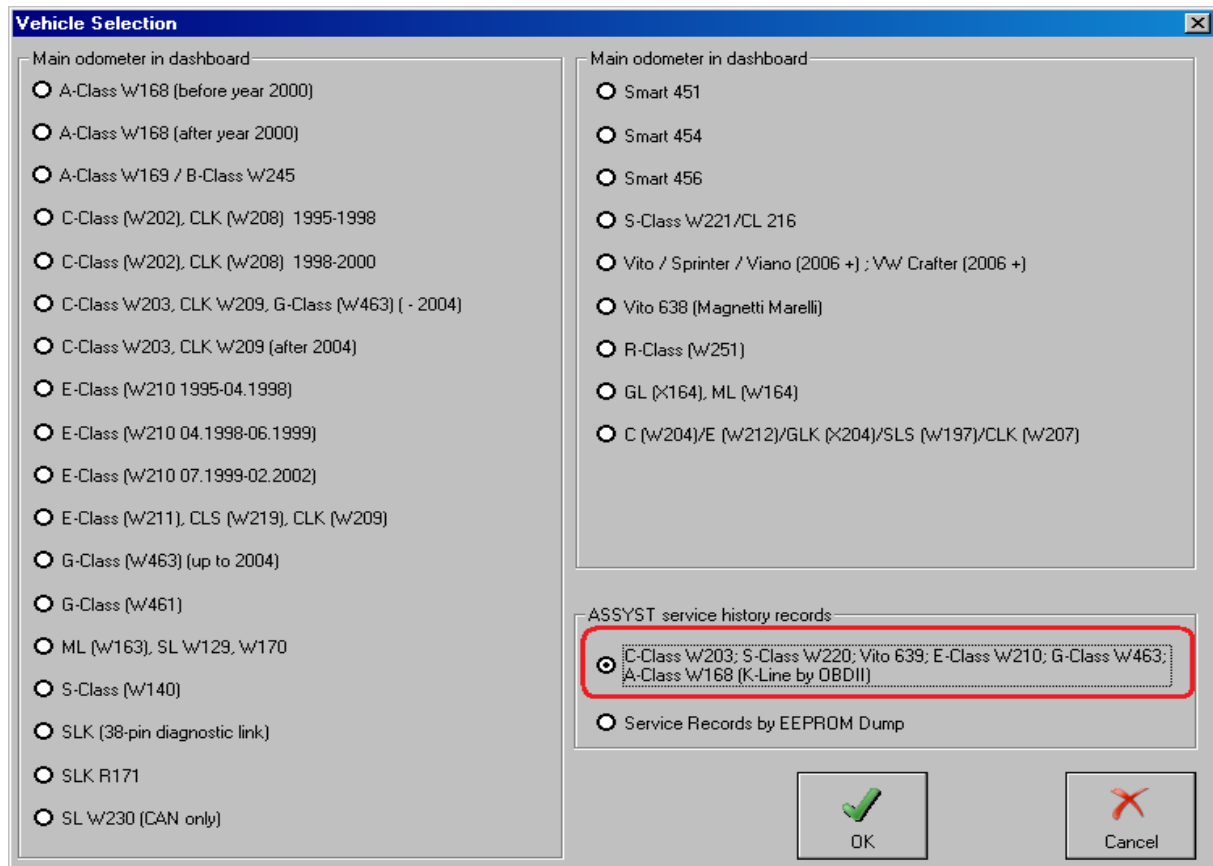
Attention: Only for W220 S-Class the odometer can not be changed by OBD ! Instead, the EEPROM of the dashboard must be read with a programmer and then the odometer should be modified by using the “Dump Tool” special function.

2. Modifying the ASSYST Service History Records

To modify the Assyst Service History Records there are 2 options:

2.1 Modifying Assyst service history by K-Line

Open the Special Functions tab and under “Assyst Service History Records”, select the first option as shown in the next screenshot:



After you press the button “OK” you will see another screen from where you can Get and Set the service history records, which are currently stored in the dashboard.

This option works only for some of the vehicle models, which this document describes. If this option does not work you should use the second option.

2.2 Modifying Assyst service history by EEPROM dump

You can read the EEPROM of the dashboard by using the special function “EEPROM Read/Write” and then you can edit the service history records in the saved dump, by selecting the seconds option under “ASSYST Service history records”. After you finish editing the dump – save the modified dump and again use the special function “EEPROM Read/Write” to program the modified dump back in the dashboard. After you have finished this operation you should verify the result by connecting to the dashboard and pressing the button “Actual Values”.

This option will not work for W-168 A-Class and W220 S-Class. However, it works for the early W203 C-Class and W463 G-Class vehicles.