

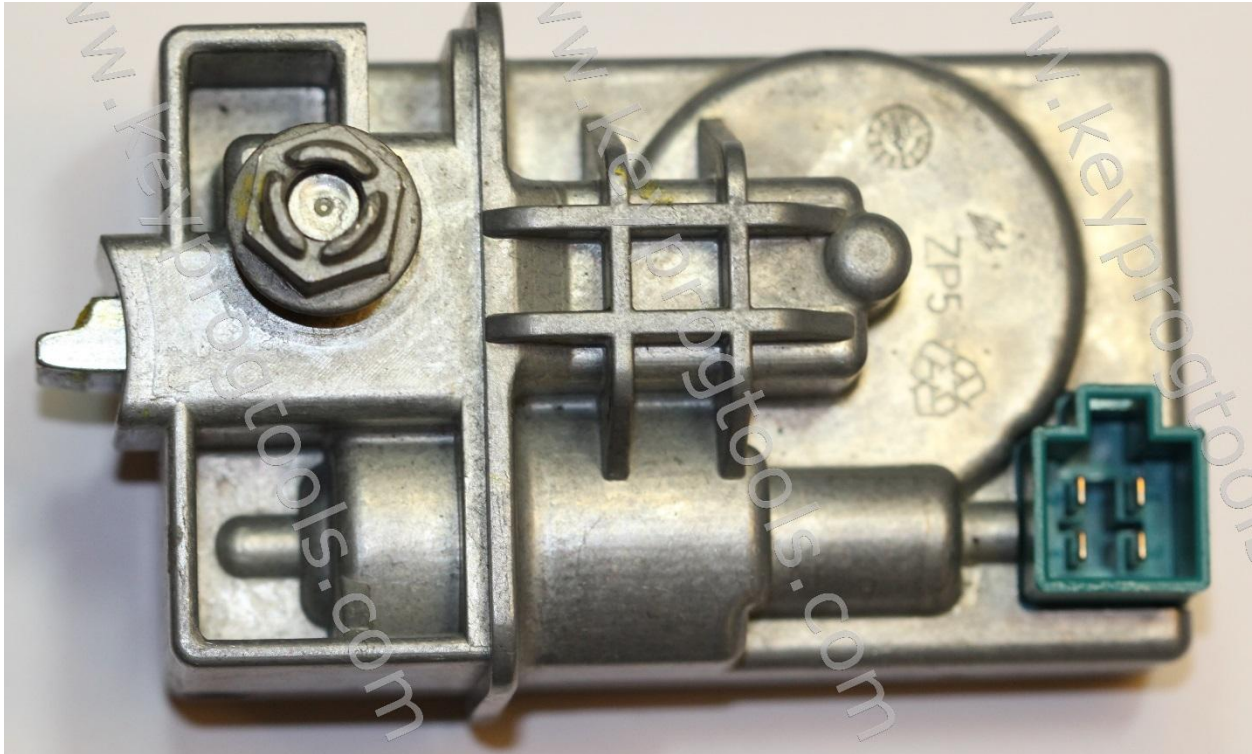
# SIMON TOUCH

[www.keyprogtools.com](http://www.keyprogtools.com)

## ESL DOCTOR



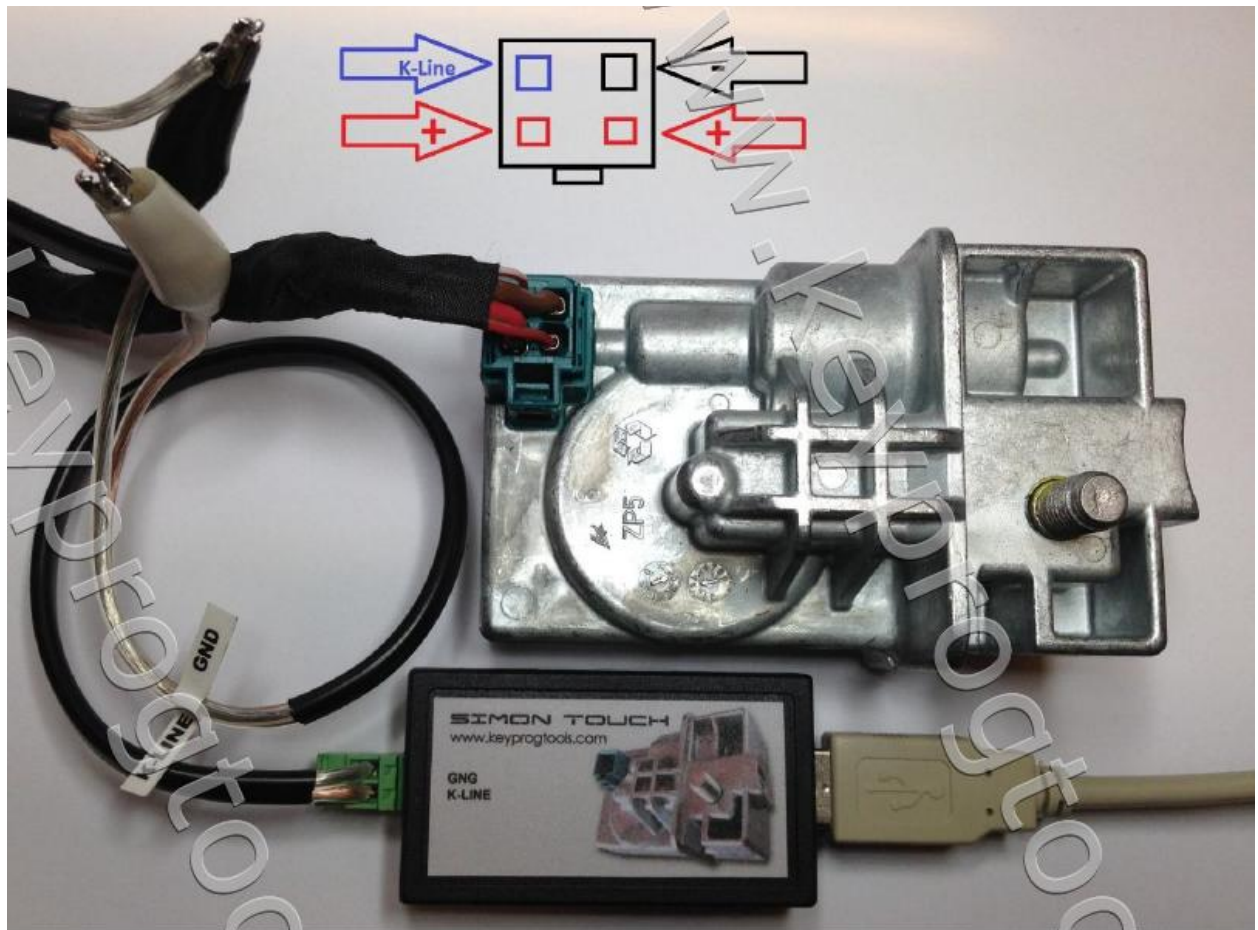
**How to change MB ESL/ELV Motor  
Repair NEC Moving position**



- Most of the ESL problem comes from defective ESL Motor.
- To change the Motor, follow our instructions.

**ESL Voltage must be 12V Minimum 8A**

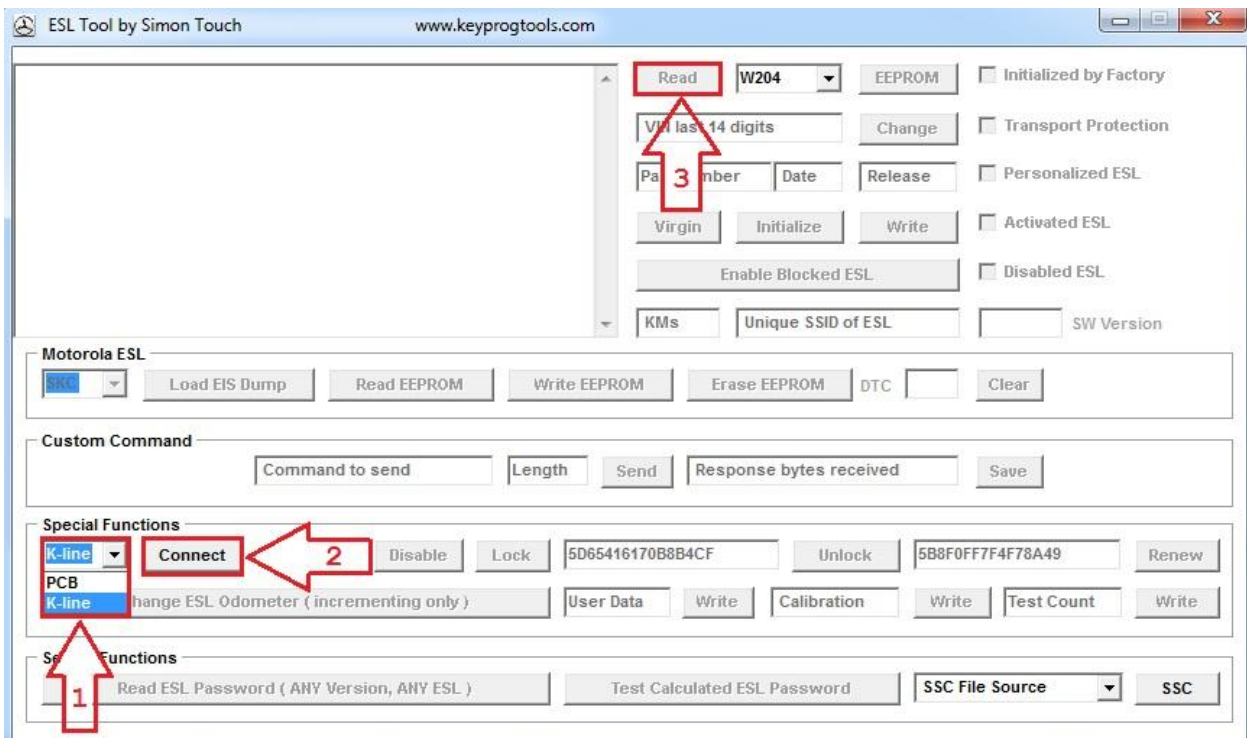
- P.S CHANGING THE ESL MOTOR AND ASSEMBLING THE ESL WITHOUT REPARING THE NEC MOTOR POSITION WILL KILL THE ESL NEC, In this case you need to renew the ESL using STMB015 function.
- Plug the MB NEC Steering device by K-Line.



- Open the ALL IN ONE MB Software, and select ESL.

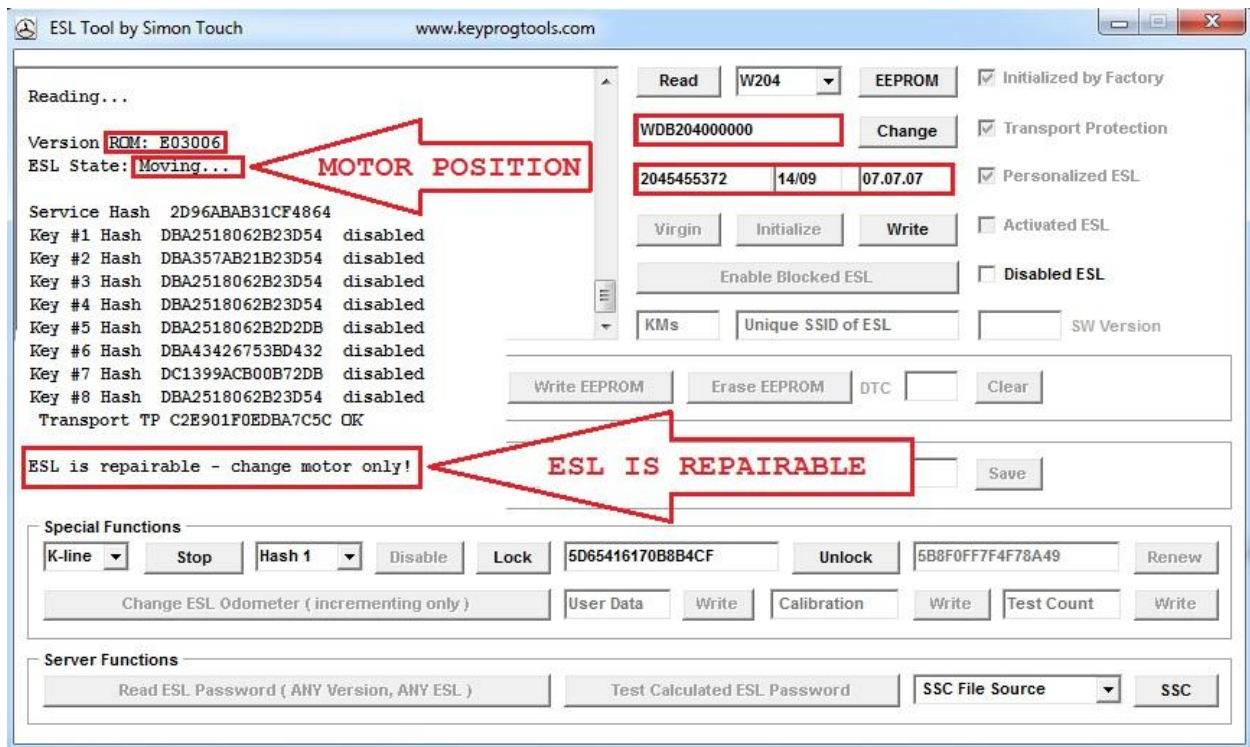


- Select K-line, connect and click on read.



- Device will show you if the ESL is reparable or not, ESL Status and Motor position.





If it's repairable, follow the instructions to test the ESL switches, fix the ESL NEC moving position, and change the ESL Motor without killing the ESL NEC.

- Remove the ESL from the car, use star screw driver number 5 or 6 and open the ESL.

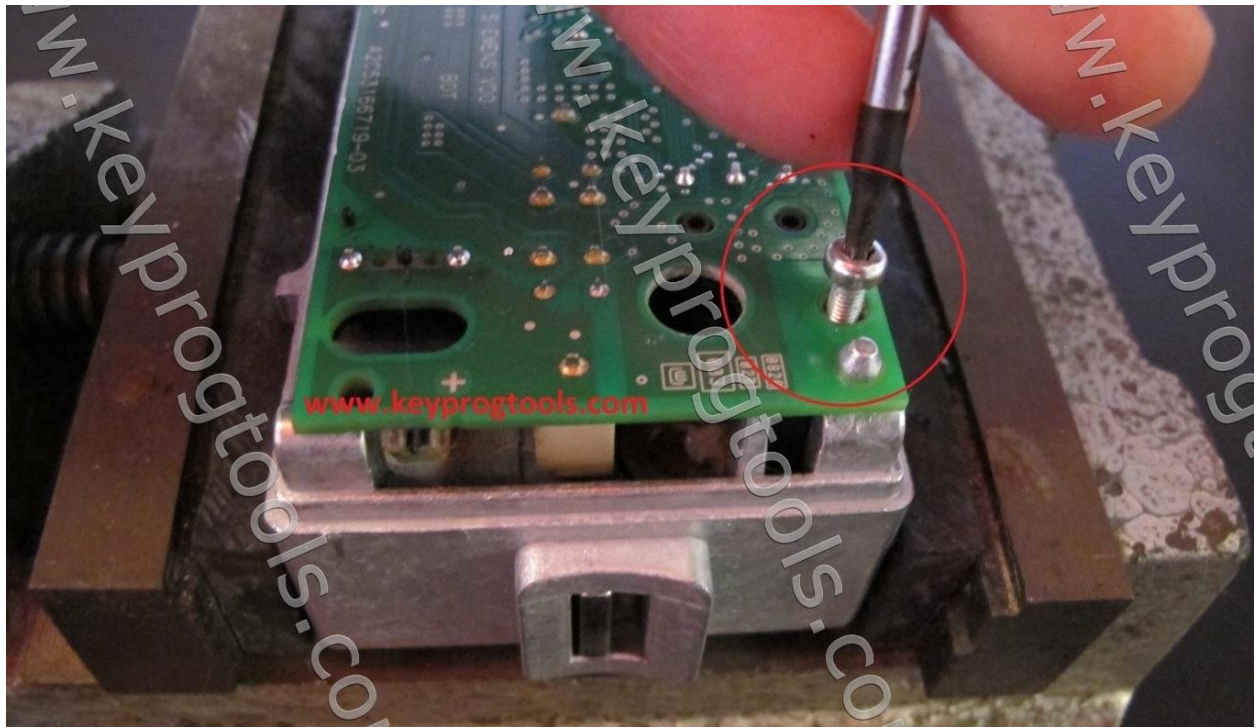


- Turn the pin slowly toward the clock to pull it out.

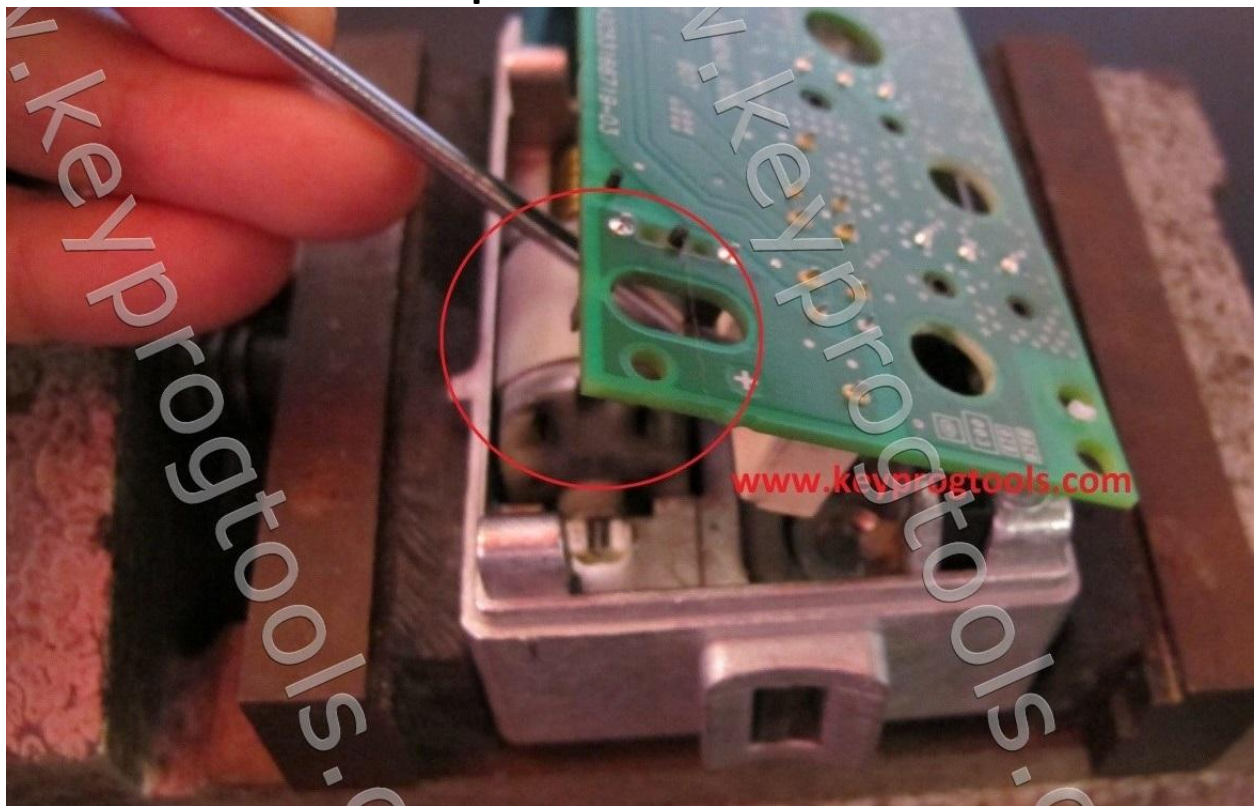


- Remove the board screw.



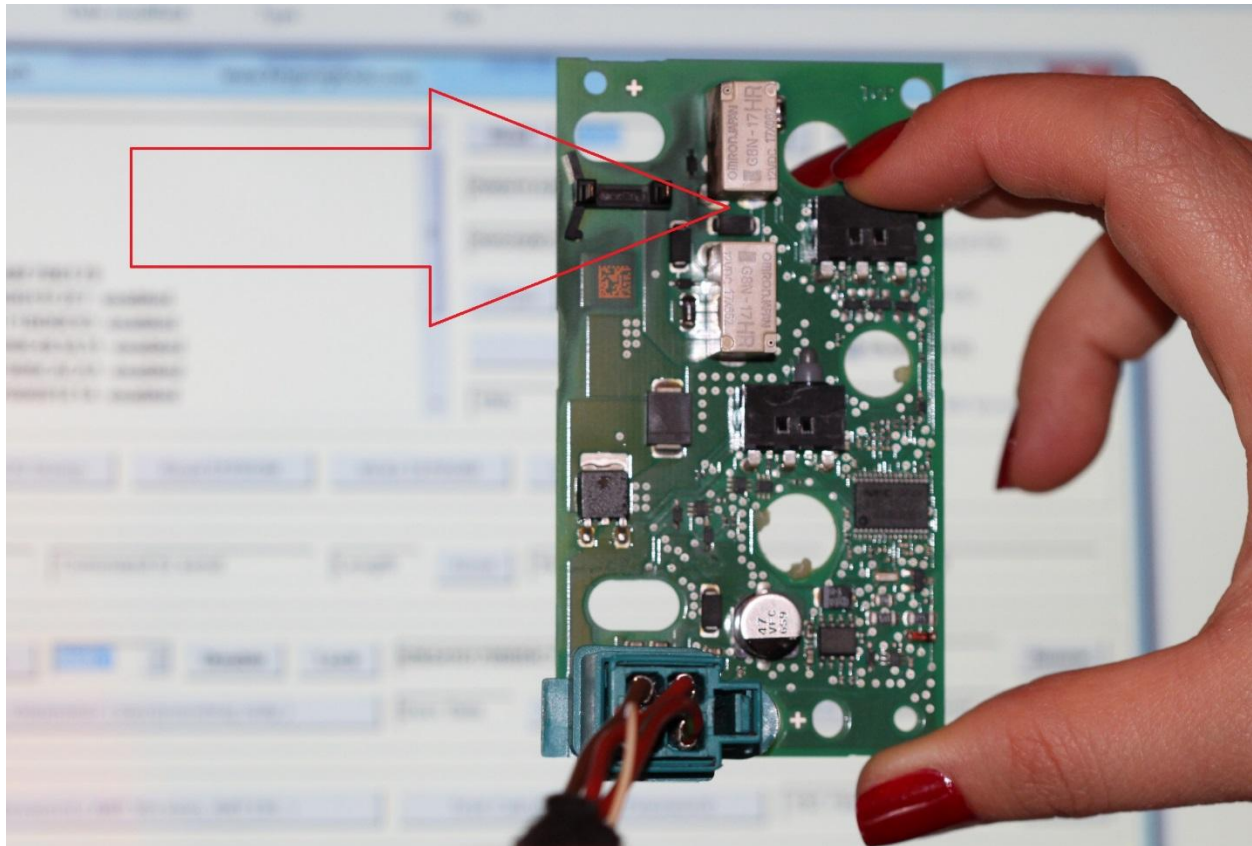


- Use a screw driver to pull the ESL board.

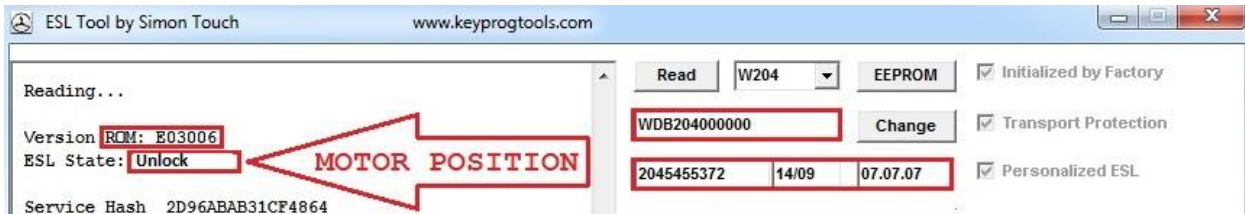
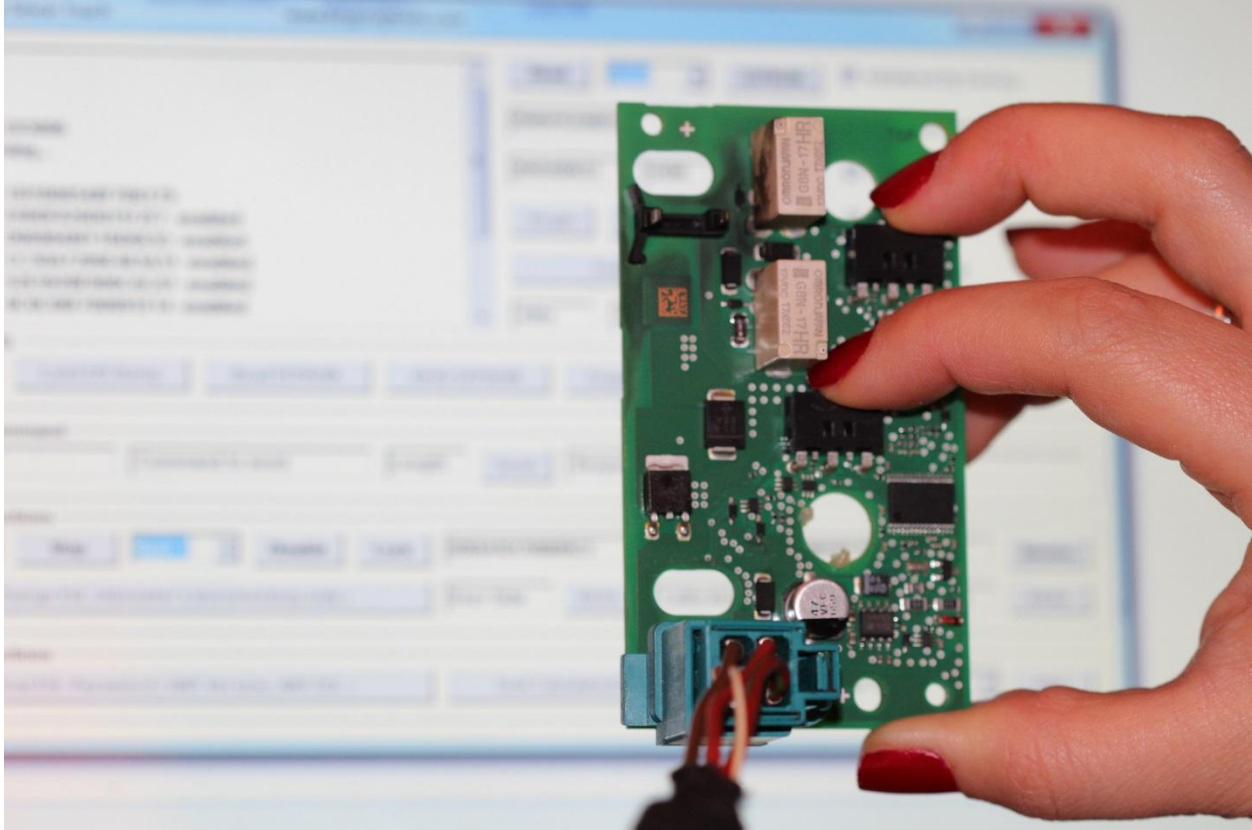




- Remove the ESL PCB, plug the power/K-Line socket.
- Press and hold the switch on top and click one read to check the switch functionality, software will show you the ESL in Locked position.



- Press and hold the 2 switches and click on read. You will see the ESL in Unlocked position.

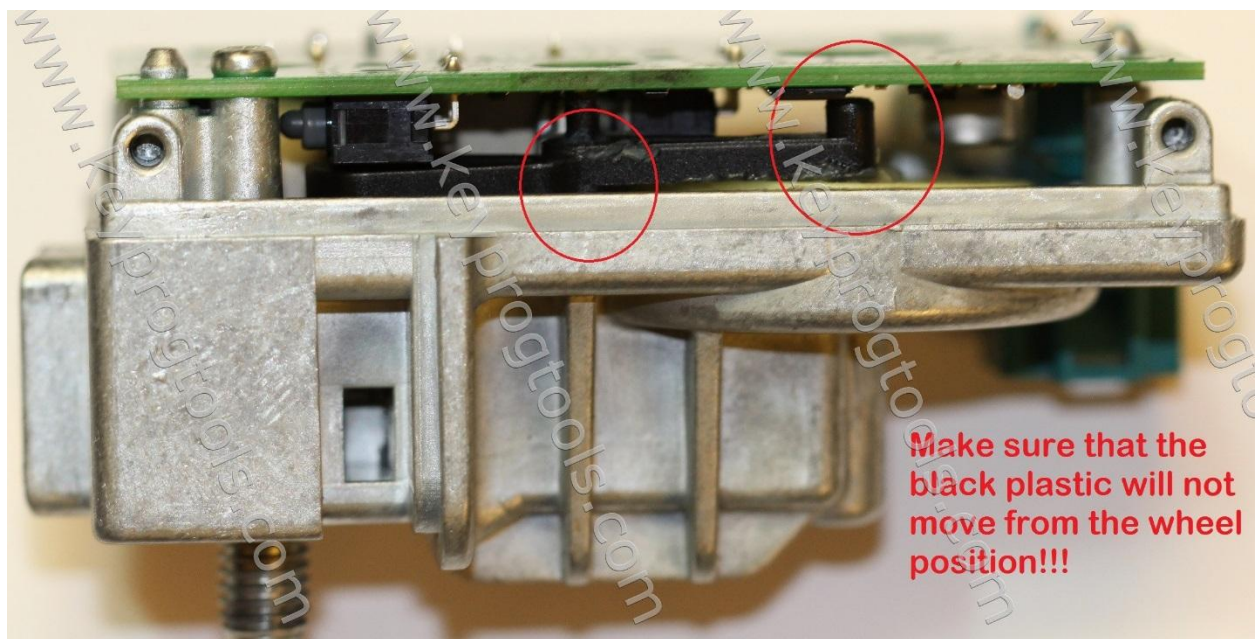
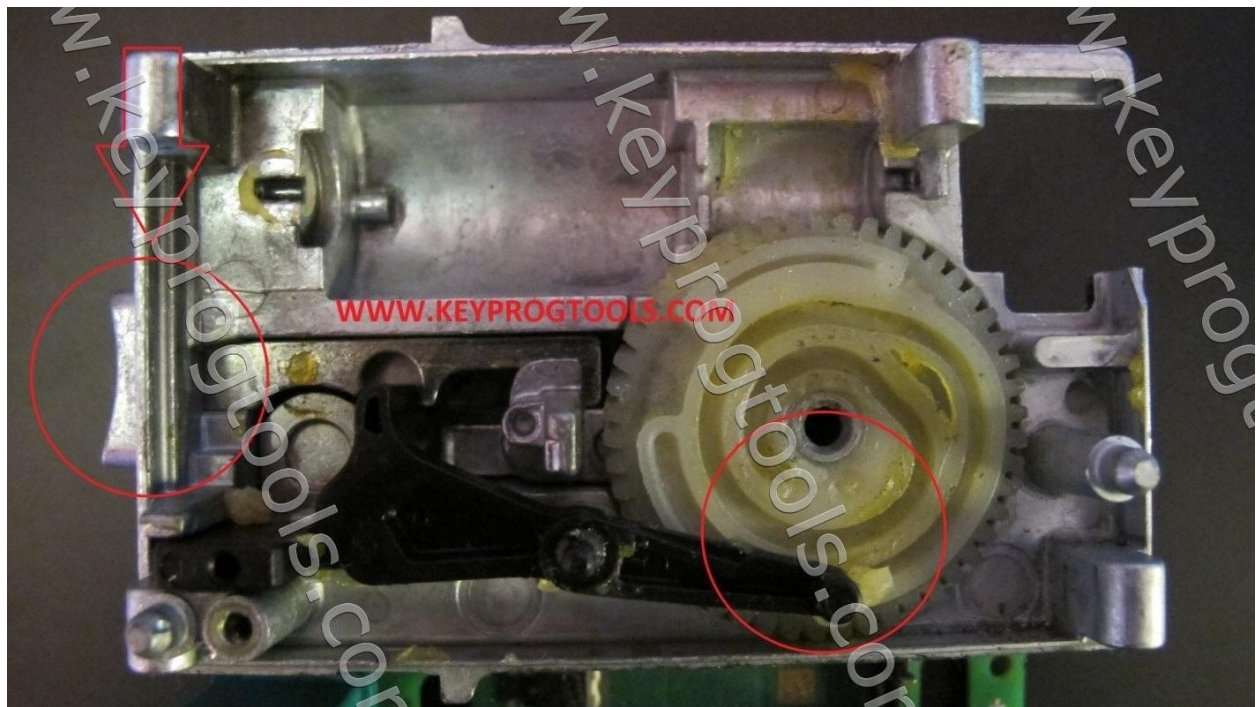


- Keep holding the 2 switches and disconnect the power from the ESL, now NEC Calculation is on unlock position.
- Change the ESL Motor with new one and assemble the ESL on unlock position, it is recommend to put some grease under the ESL wheel.
- If you disconnect the power and the ESL is in Moving position, this will kill the ESL NEC after the assembling.



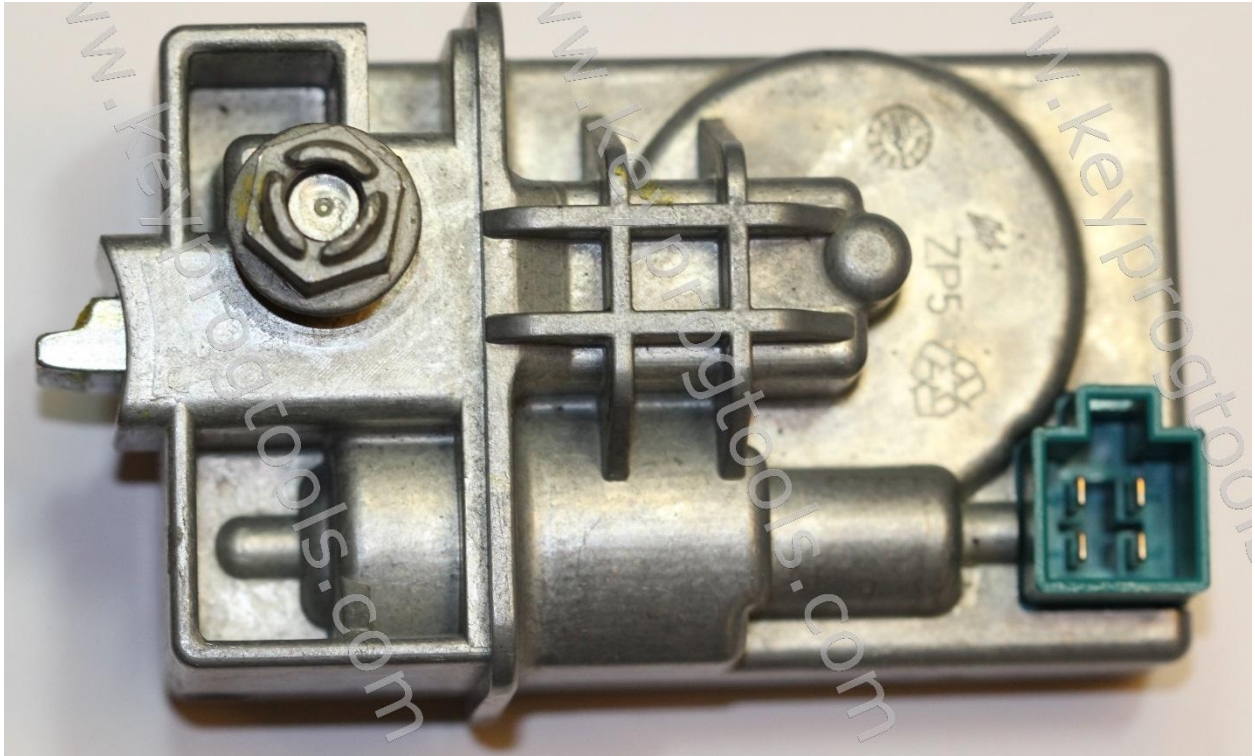
- If you choose the Locked switch position and you assemble the ESL on Unlocked position, this will kill the ESL NEC.

- Assembles the ESL on UNLOCKED position.





**You can always change the ESL Vin/mileage/production date and part number by K-Line.**



Start the car.

📺 **Enjoy** 😊

**P.S Hidden Defect Protection diodes  
Black traces around, it is carbon contamination from sparking  
DC Motor.**

